



WINNER 2020
HIA Hunter Region

Housing World, Watagan Park



100% Australian
Family Owned

Welcome Home

Welcome to our display village at Housing World Watagan Park. We are proud to present four brand new designs showcasing a loft, Granny Flat and new variants of some of our most popular designs.

We have an extensive range of other designs available to fit all types and sizes of blocks, lifestyles and families. Unlike many other builders, we embrace flexibility. After all, it's your family home.

Please feel free to have a no obligation discussion with any of our experienced Building and Design specialists to discuss your wants, needs and queries. Thanks for taking the time to visit us.

Make yourself at home!

Grenache Cabernet Home & Granny Flat



with Pavilion 3 façade



Page 16

The first home on the left looking from the street is a 4 bedroom home with an attached, self-contained, 1 bedroom granny flat under the main roof (tucked behind the garage on the left). The **Grenache Cabernet** is perfect for in-law accommodation or for rental income. This contemporary and compact home will surprise with its homely appeal.



Sales Office

Verdelho Four Twist 27



with Verona façade



Page 12

The **Verdelho** series is Beechwood's all time most popular design. We have updated this classic for living in the 2020's. The **Verdelho** Four Twist 27 features 4 well proportioned bedrooms, a separate home theatre and a comfortable living/meals area. The substantial, well appointed, kitchen sits at the heart of this home and is the perfect place from which to watch life pass by.



Sales Office

Brunello Five Guest Loft 35



with Sorrento 1 façade



Page 8

The **Brunello** Five Guest Loft 35 represents the pinnacle of modern living. From the sumptuous gourmet kitchen, to the stunning living area which flows onto the sprawling outdoor terrazza, this home is perfect for larger families. The clever loft area features a substantial theatre room as well as a guest bedroom with full amenities. Open plan living has never looked so good.



Sales Office

Moselle Five Guest 33



with Hampton 2 façade

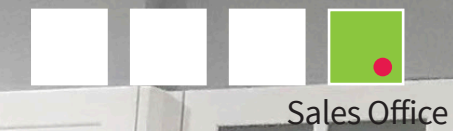


Page 4

The **Moselle** Five Guest 33 brings a touch of class and luxury to the modern family home. The centre piece is the beautiful, opulent kitchen and spacious adjoining living/dining area. This is supported by 5 generous bedrooms, 3 stylish bathrooms, independant home theatre room, children's media area and grand undercover terrazza. Truly a home to fall in love with.



Sales Office



Moselle Five Guest 33
with Hampton 2 façade



Living
luxé



WINNER 2020
HIA Hunter Region

Best Display Home
\$450,001 and \$500,000



FINALIST 2021
HIA Hunter Region

Best Display Home
\$450,001 and \$475,000

Best Kitchen
in a Display Home

Moselle Five Guest 33
with Hampton 2 façade

SUITS 15m WIDE LOTS

House width:	12.71m
House length (with Patio):	27.76m
Living:	237.4m ²
Terrazza:	36.4m ²
Garage (Double):	36.8m ²
Patio:	7.1m ²
Total:	317.7m ²



Block width suitability may vary by Council. Images are for illustrative purposes only. Plans, prices and specifications may change without notice. Dimensions may alter between displayed and standard versions. Further upgrades are displayed (such as façades, lighting, tiles and materials), as well as interior decor items and landscaping features (which are not supplied by Beechwood). Façade upgrades will affect dimensions, size and layout at front of home. Some display homes feature additional windows that are not standard. Ask our Building and Design team for standard design and inclusions details and pricing. E&OE.



WINNER 2020
HIA Hunter Region



FINALIST 2021
HIA Hunter Region



Modern
style



Sales Office

Brunello Five Guest Loft 35
with Sorrento 1 façade



FINALIST 2020
HIA Hunter Region

Best Display Home
\$450,001 and \$500,000

Brunello Five Guest Loft 35
with Sorrento 1 façade

5

3

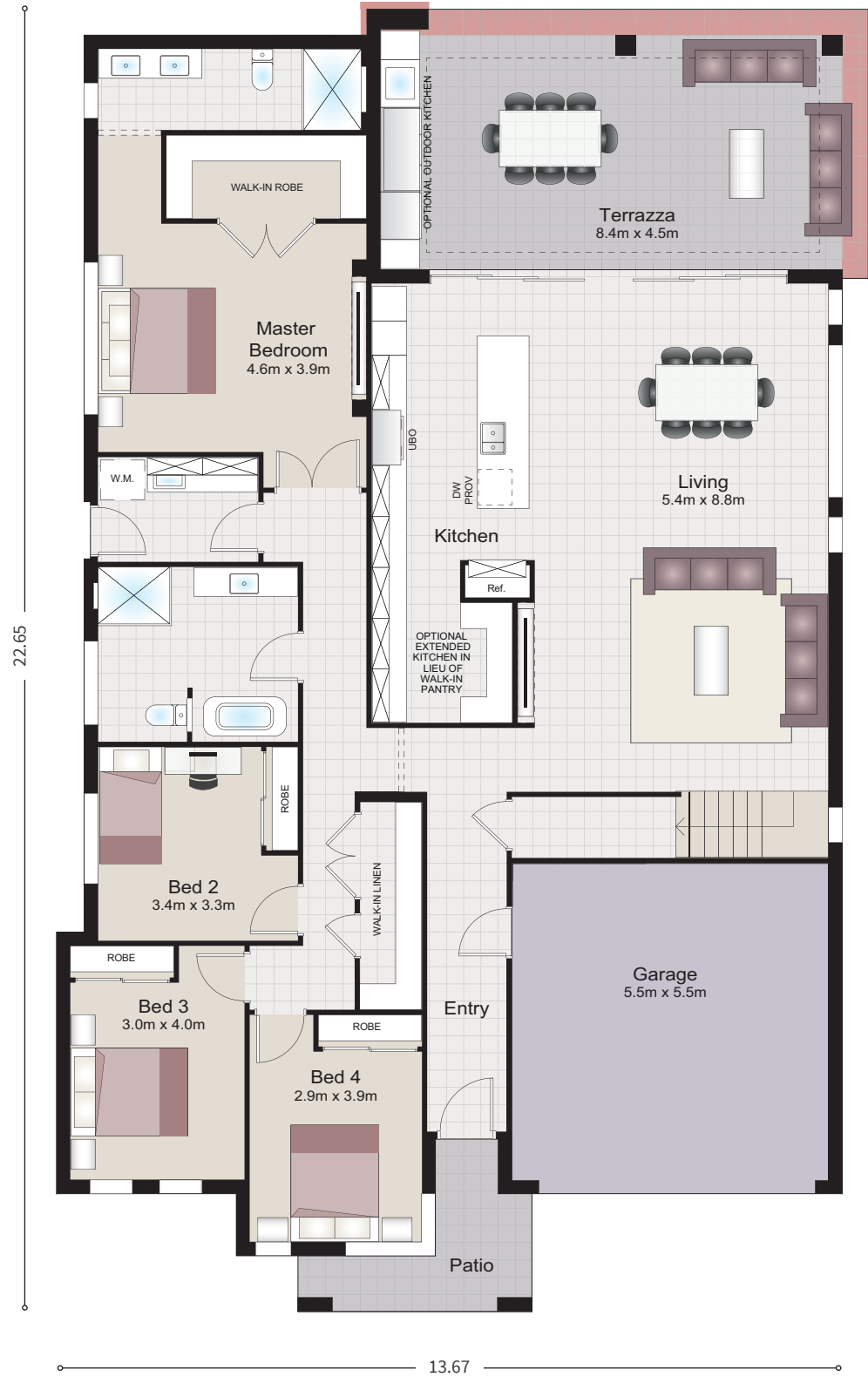
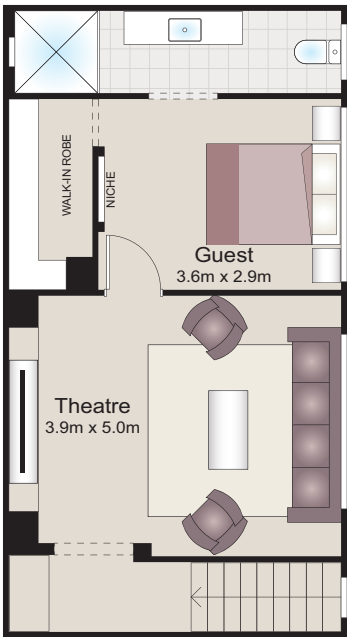
1

2



SUITS 30m DEEP LOTS

House width:	13.67m
House length (with Patio):	22.65m
Ground floor Living:	204.6m ²
First floor Living:	45.2m ²
Garage:	30.3m ²
Terrazza:	38.6m ²
Patio:	6.6m ²
Total:	325.3m²



Non-standard external areas



FINALIST 2020
HIA Hunter Region

Wider Frontages

Wider Frontages



FINALIST 2021
HIA Hunter Region

Best Display Home
under \$300,000



Sales Office

Verdelho Four Twist 27
with Verona façade



Refined
simplicity

Verdelho Four Twist 27
with Verona façade

4

2

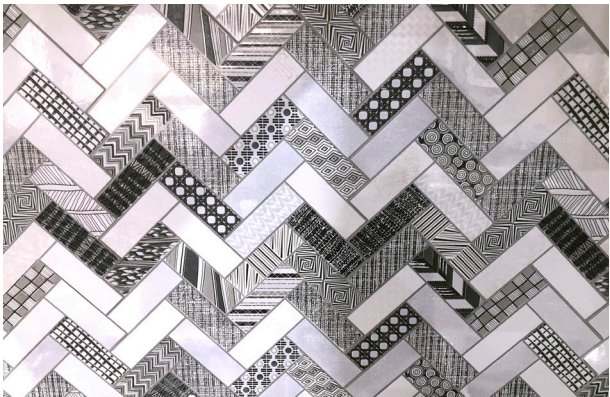
1

2

SUITS 14m WIDE LOTS

SUITS 30m DEEP LOTS

House width:	12.11m
House length (with Patio):	22.50m
Living:	189.9m ²
Terrazza:	24.6m ²
Garage:	30.9m ²
Patio:	6.9m ²
Total:	252.3m ²



Frontages up to 15m

Frontages up to 15m



Sales Office

Grenache Cabernet

with Pavilion 3 façade



WINNER

Best Display Home
under \$250,000



FINALIST 2020
HIA Hunter Region

Best Display Home
\$350,001 and \$375,000

Double
delight

Grenache Cabernet

Home with Granny Flat
with Pavilion 3 façade

 1

 1



 4

 2

 2

SUITS 30+m DEEP LOTS

HOME SUITS 12.5m WIDE LOTS

House width (with single garage):	7.92m
House width (with double garage):	10.81m
House length:	26.63m
Living:	144.4m ²
Terrazza:	49.5m ²
Garage:	30.3m ²
Patio:	5.2m ²
Total:	229.4m ²

GRANNY FLAT ATTACHED

House width:	4.31m
House length:	14.27m
Living:	59.6m ²
Terrazza:	20.2m ²
Patio:	1.8m ²
Total:	81.6m ²

COMBINED SUITS 14.5m WIDE LOTS

SUITS 30+m DEEP LOTS

House width:	12.23m
House length:	26.63m
House Living:	144.4m ²
Terrazzas:	69.7m ²
Garage:	30.3m ²
Patios:	7.0m ²
Granny Flat Living:	59.6m ²
Total:	311.0m ²



26.63

12.23

Non-standard external areas



FINALIST 2020
HIA Hunter Region





www.beechwoodhomes.com.au



**100% Australian
Family Owned**